

Exoplanet: HAT-P-10/WASP-11 b

Observer: Fabrizio Marchi e Roberto Garofalo

Post address: V.lo Madonnetta 35, Carbonera, Treviso

E-mail: fabrizio.marchi@oatv.it

Station: Emberger Alm, Austria

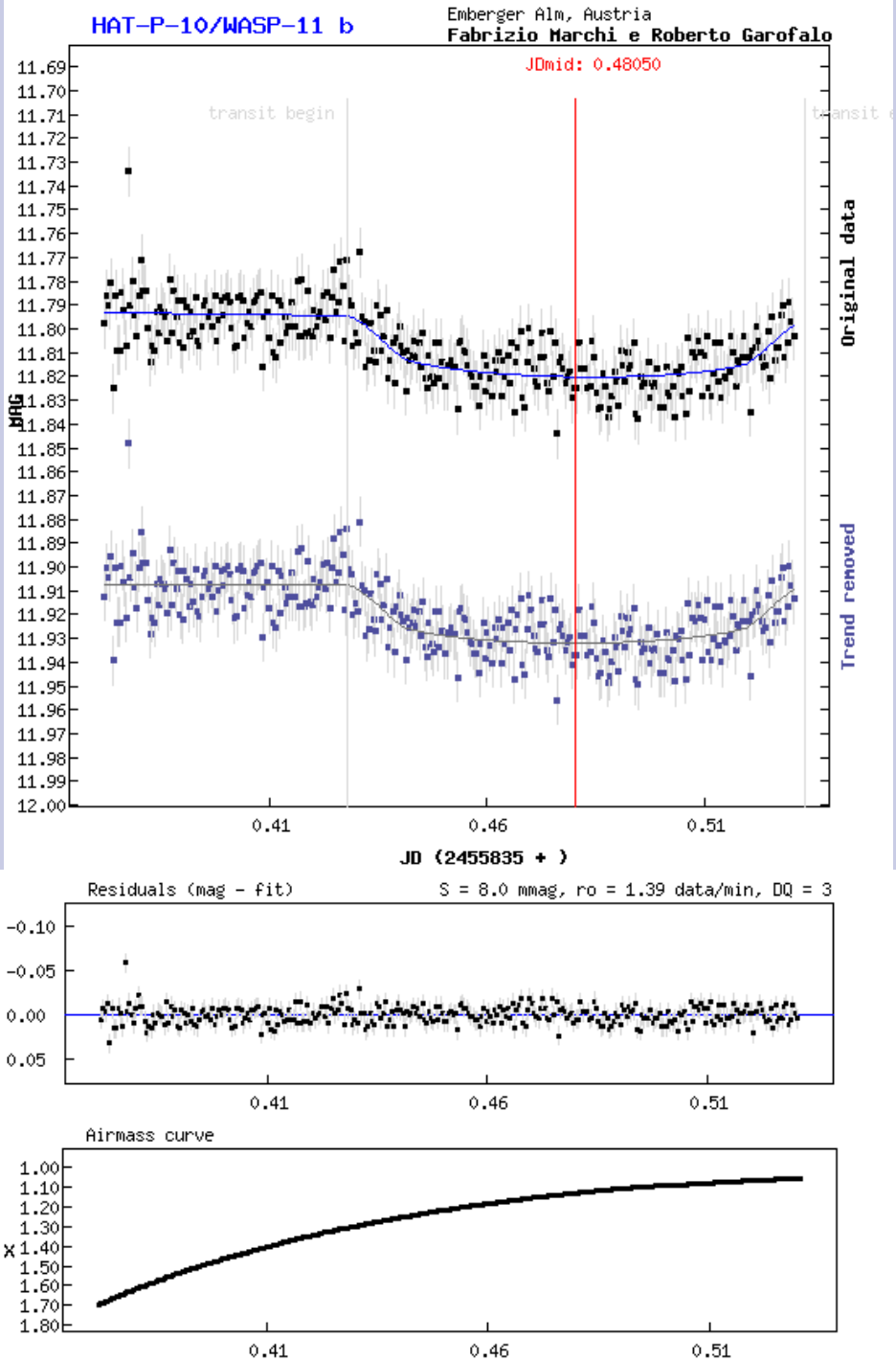
Observing location: ELongitude: **13°** | Latitude: **47°**

Equipment: New ton 300 F4 and Sbig 8300

Used filter: U B V R I Clear

Notes:

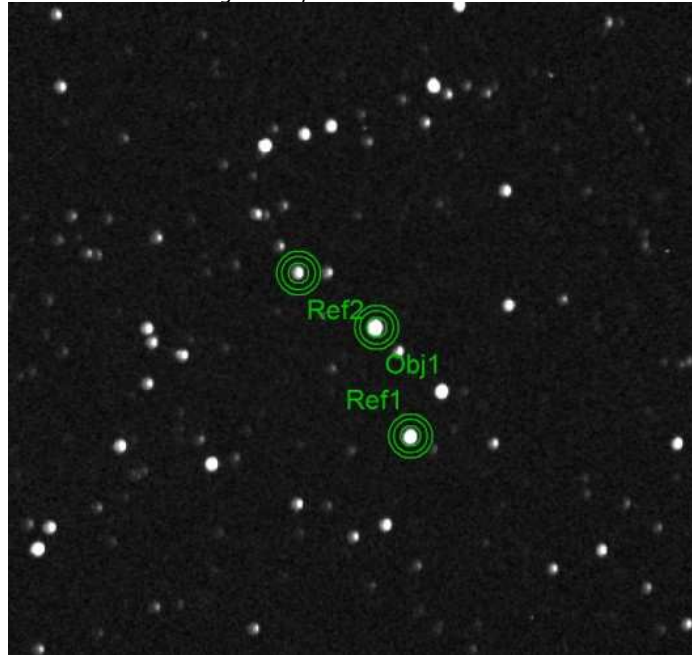
Observation already published:



JD mid:
HJD mid: (helcor = **0.00393**)
Mid transit - UT:
Duration: minut
Depth: mag

Submitted data: **geocentric based on UTC**

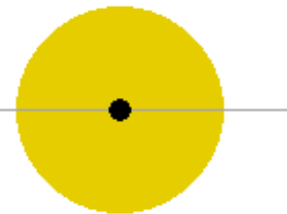
Finding chart / reference CCD frame:



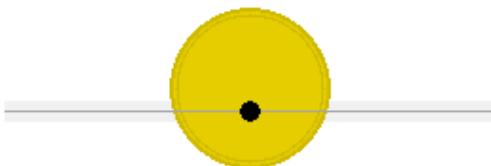
Derived system geometry

	<i>Catalogue data</i>	<i>Measured data</i>
R _p :	1.045 +/- 0.05 R _{Jup}	1.176 ^{-0.079} ^{+0.074} R _{Jup}
R _* :	0.81 +/- 0.03 R _{Sun}	<i>fixed, errors included in i</i>
A:	0.0439 +/- 0.0009 AU	<i>fixed, errors included in i</i>
Per:	3.722469 days	<i>fixed</i>
i :	88.5 +/- 0.6 °	87.49 ^{-0.43} ^{+0.55} ^{+1.70} °

Sun & Jupiter scale, i=90°



Catalogue geometry



Measured geometry

