

**Exoplanet: HAT-P-10/WASP-11 b**

**Observer:** Fabrizio Marchi e Roberto Garofalo

**Post address:** V.lo Madonnetta 35, Carbonera, Treviso

**E-mail:** fabrizio.marchi@oatv.it

**Station:** Emberger Alm, Austria

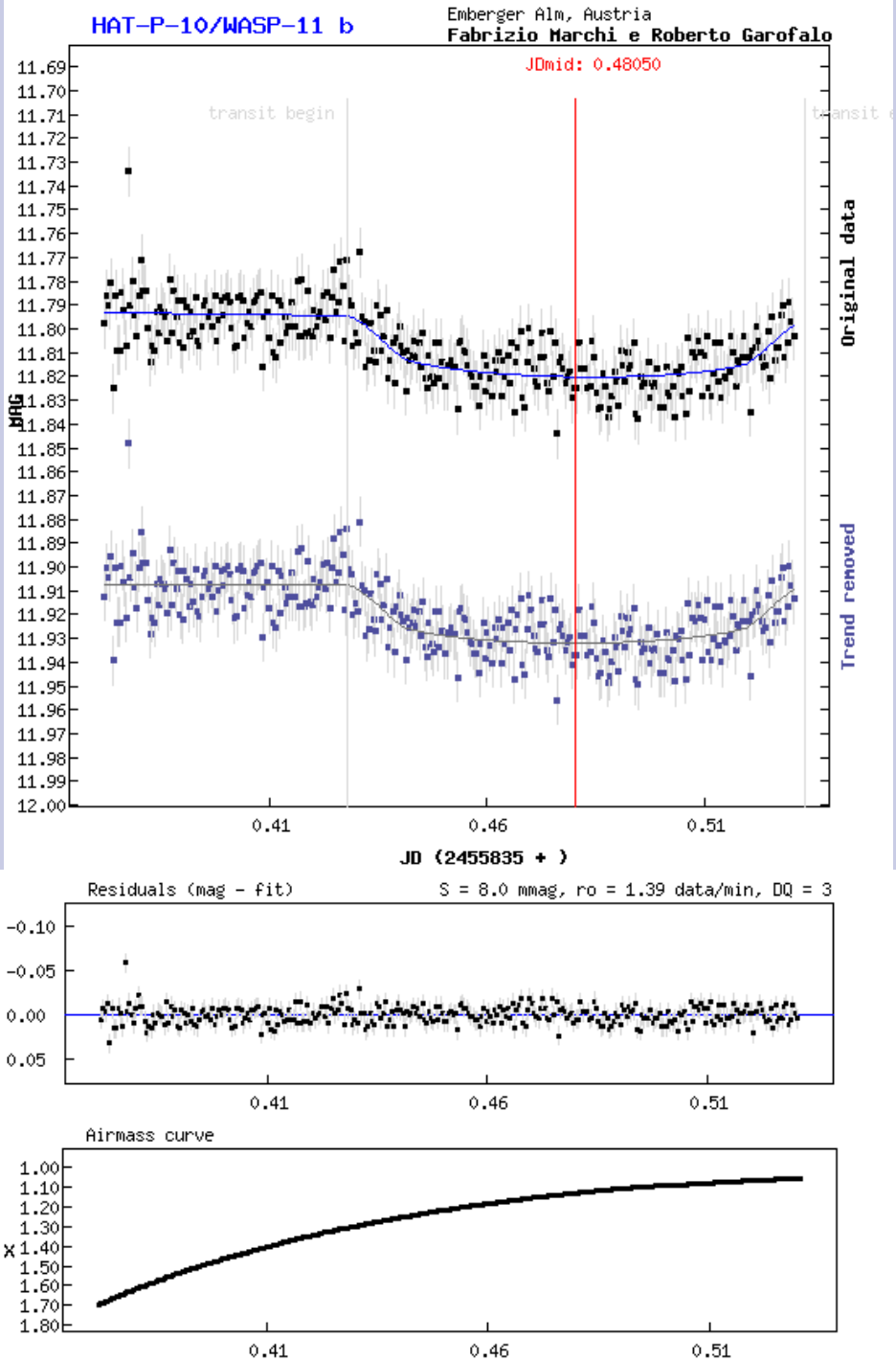
Observing location: ELongitude: **13°** | Latitude: **47°**

**Equipment:** New ton 300 F4 and Sbig 8300

**Used filter:**  U  B  V  R  I  Clear

**Notes:**

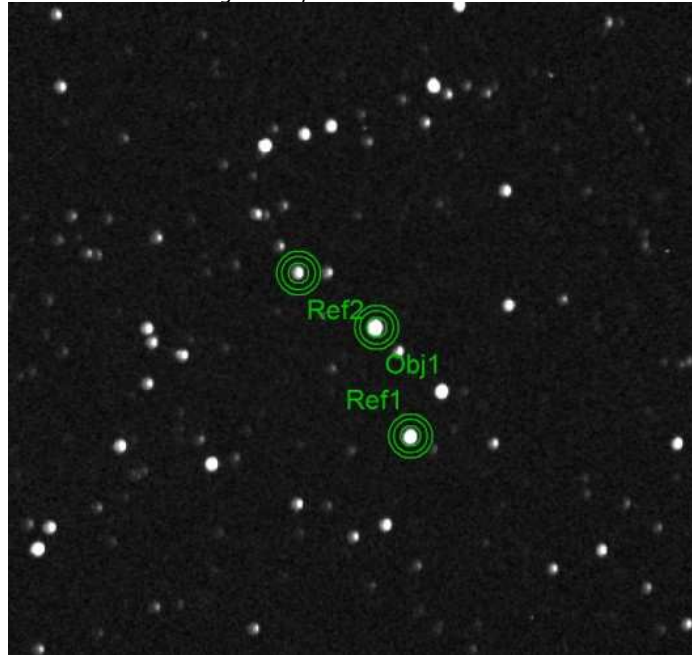
**Observation already published:**



**JD mid:**   
**HJD mid:**  (helcor = **0.00393**)  
**Mid transit - UT:**   
**Duration:**  minut  
**Depth:**  mag

Submitted data: **geocentric based on UTC**

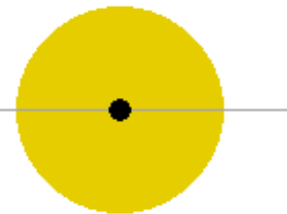
Finding chart / reference CCD frame:



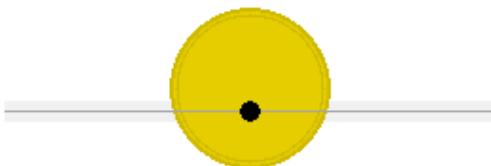
### Derived system geometry

	<i>Catalogue data</i>	<i>Measured data</i>
R <sub>p</sub> :	1.045 +/- 0.05 R <sub>Jup</sub>	<b>1.176</b> <sup>-0.079</sup> <sup>+0.074</sup> R <sub>Jup</sub>
R <sub>*</sub> :	0.81 +/- 0.03 R <sub>Sun</sub>	<i>fixed, errors included in i</i>
A:	0.0439 +/- 0.0009 AU	<i>fixed, errors included in i</i>
Per:	3.722469 days	<i>fixed</i>
i :	88.5 +/- 0.6 °	<b>87.49</b> <sup>-0.43</sup> <sup>+0.55</sup> <sup>+1.70</sup> °

Sun & Jupiter scale, i=90°



Catalogue geometry



Measured geometry

